

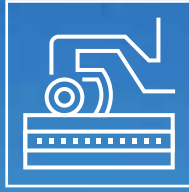


MADE IN GERMANY



ENVIRONMENTAL TECHNOLOGIES

FORESTRY & RECYCLING



ENVIRONMENTAL
TECHNOLOGIES

- AGRICULTURE
- GRADER TOOLS
- TUNGSTEN CARBIDE
- FORESTRY & RECYCLING



IN USE WORLDWIDE

TUNGSTEN CARBIDE AND STEEL

Steel and carbide are two materials with totally different expansion coefficients when subjected to heat. Nevertheless, it is of steel and tungsten carbide that our tools are made, with tungsten carbide for the wear-resistant tip, and steel for the tool shank. Since tools reach high temperatures during use, extreme tensile stresses are generated. These stresses are absorbed by a special brazing material that joins the tungsten carbide tip to the steel section.

We have developed our own methods and systems for this brazing process, which is carried out on fully automated machines with the process covered in an inert protective gas. Manufacturing parameters are fully monitored and documented to ensure consistent quality. Afterwards, brazing shear strengths are checked to ensure that our "Masters of the construction site" lose no time due to broken tools!



BETEK HIGH-TECH TOOLS



1

CUSTOMER SERVICE

- Efficient, customised solutions based on flexible structures
- Personalised, quick response to customer requirements



2

DEVELOPMENT & CONSTRUCTION

- Quick creation of samples and prototypes
- Competitive pricing thanks to close cooperation with all production units



3

TUNGSTEN CARBIDE MANUFACTURING

- High-purity raw materials are used for high strength
- Consistently high, pore-free tungsten carbide quality through precise process control thanks to years of experience and know-how



4

SOLDERING PRODUCTION UNIT

Production facilities and processes specially developed to perfection by experts in the combination of tungsten carbide and steel



5

AUTOMATION

Maintaining a competitive edge on the global market thanks to a high degree of automation and flexible manufacturing facilities



6

QUALITY ASSURANCE

Continuous quality testing of the entire manufacturing chain all the way up to the installation site, in conformity with DIN ISO 9001:2000 and DIN EN ISO 14001



7

TRAINING

User training courses at BETEK or on-site for sustainable, long-term commercial success and customer satisfaction



8

LOGISTICS

Quick responses thanks to:

- the use of the very latest IT and enhanced logistics networking
- Standard products kept in stock

OUR KNOW-HOW COMBINED WITH
STATE-OF-THE-ART PRODUCTION
TECHNOLOGIES GUARANTEES THE
FINEST QUALITY, MADE IN GERMANY



Tools „Made in Germany“

- Experienced, flexible partner for OEM tungsten carbide tools
 - Customized development of the tools in close cooperation with well-known OEM machine manufacturers
 - BETEK provides the optimum tungsten carbide grade for each application, even for the most severe conditions
 - State-of-the-art technology in engineering and production
-

TOOL SYSTEMS FOR YOUR RECYCLING APPLICATION

BETEK is a leading international manufacturer of tungsten carbide and tungsten carbide equipped wear parts. With its 30 years of experience in the production of innovative products BETEK is the first choice for your applications: BETEK tungsten carbide tools are developed and tested in conjunction with machine manufacturers for road construction, rehabilitation and asphalt crushers, as well as with manufacturers of mulchers, wood chippers, shredders – for example for plastic and wood – and other forestry and agricultural machines. Tungsten carbide grades are matched exactly to application areas in terms of hardness and durability, ensuring high performance and break resistance. In combination with high quality steel bodies BETEK manufactures tool systems that provide excellent support to the performance of modern machines. A high degree of efficiency is guaranteed through the balance of wear between the tungsten carbide and the steel body, thus ensuring complete use of the tungsten carbide wear part.

► YOUR ADVANTAGES

- Substantially higher life time than conventional steel tools*
- Consistent crushing quality
- Durable and long lasting cutting edges
- No wear related adjustment necessary
- Long term performance due to premium materials
- Time and cost savings due to reduced wear part changes
- Optimised machine performance
- Reduced fuel consumption
- Cost savings in working capital as a result of reduced stock levels of tools

*5–10 times, e.g. for anvils (depending on machine type, working speed and consistency of the material to be crushed).


WOOD GRINDERS

> WILLIBALD



■ **BFS417**
BFS200x137x49/R/4 




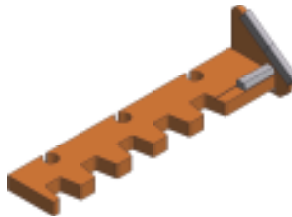
■ **BFS418**
BFS200x137x49/L/4 



■ **BAS05**
d=35x1450 



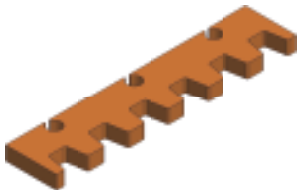
■ **BFS531**
BFS220x219x60, Ø = 51 



■ **BFS483**
BFS375x75x20/L 



■ **BFS484**
BFS375x75x20/R 



■ **BFS597**
BFS357.5x75x20/M 

MULCHERS

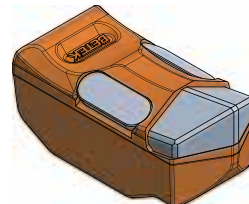
► SEPPI



■ **BFS560**
BFS103x58x53 



■ **BFS598**
BFS103x58x53/1 



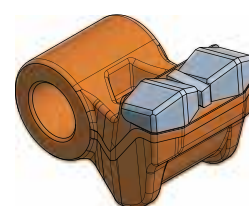
■ **BFS762**
BFS114x59x53 



■ **BFS99**
BFS105x70x56, Ø = 36 



■ **BFS18**
BFS105x70x56/1, Ø = 31 




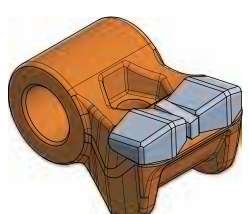
■ **BFS554**
BFS114x77x72, Ø = 31 



■ **BFS605**
BFS108x72x64, Ø = 31 



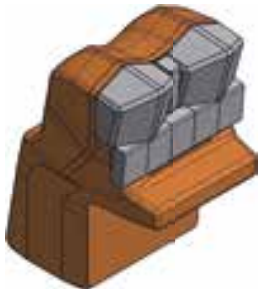
■ **BFS537**
BFS109x72x63, Ø = 31 



■ **BFS538**
BFS108x72x64, Ø = 31 

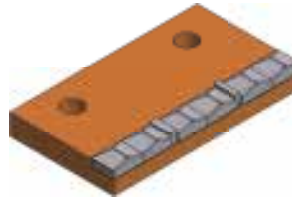
MOBILE STONE CRUSHERS

> PTH



■ BFS617

BFS129x91x84/5



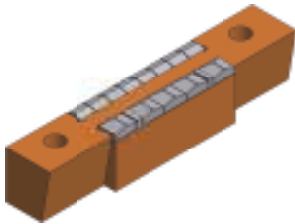
■ BFS505

BFS180x100x20



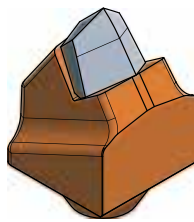
■ BFS424

BFS482x85x41



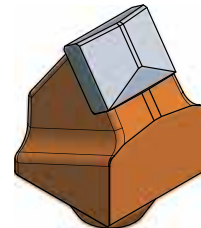
■ BHS59

BHS318x60x60



■ BFZ278

BFZ68x40



■ BFZ279

BFZ68x40/2



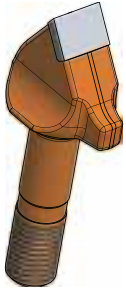
■ BFZ365-ENG

BFZ68x40/3



WOOD GRINDERS

► BANDIT




■ **BFZ195**
BFZ142x26 / 7/8" 




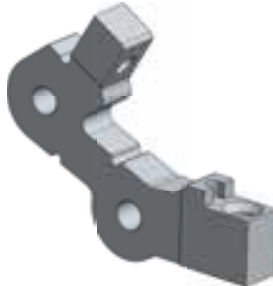
■ **BFZ212**
BFZ142x25 / 7/8" 



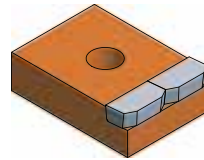
■ **BFZ262**
BFZ142x32 / 7/8" 



■ **BHZ33**
BHZ292x176x38 



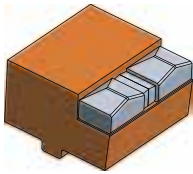
■ **BHZ22**
BHZ297x187x40 



■ **BFS291**
BFS70x50x22 

WOOD GRINDERS

> DURATECH



■ **BFS153**
BFS70x70x46/1 



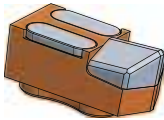
■ **BHS15**
BHS29x241x60 



■ **BFS140**
BFS195x117x30/4 



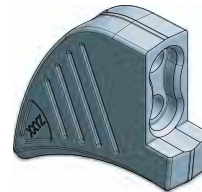
■ **BFS146**
BFS195x117x30/1 



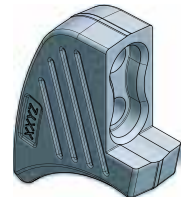
■ **BFS142**
BFS45x40x83/2 



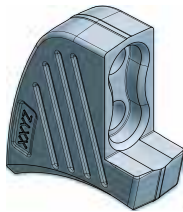
■ **BFS285**
BFS40x40x78/7 



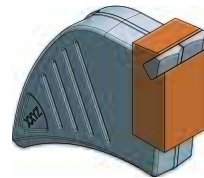
■ **BHS65**
BHS163x139x36 



■ **BHS94**
BHS129x99x36 



■ **BHS95**
BHS118x99x36 



■ **BFS285 + BHS65**



STUMP CUTTERS

► **RAYCO | UFKES | VERMEER**



■ **BFS234**
BFS109GB



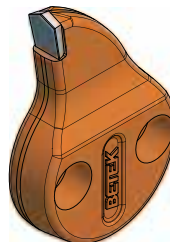
■ **BFS241**
BFS109GG-M



■ **BFS242**
BFS106LG-M



■ **BFS232**
BFS106RB



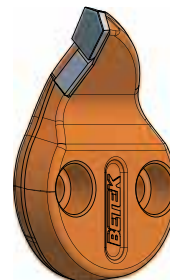
■ **BFS401**
BFS109-43-GB



■ **BFS398**
BFS109-43-GG



■ **BFS400**
BFS106-43-LG



■ **BFS399**
BFS106-43-R



STUMP CUTTERS

► **RAYCO | UFKES | VERMEER**



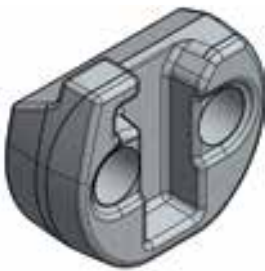
■ **BFS480**
BFS93x53x13/R 



■ **BFS481**
BFS93x53x13/L 



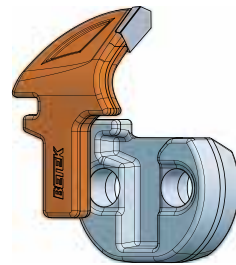
■ **BFS482**
BBFS93x53x13/M 



■ **BHS60**
BHS78x56x28/S 



■ **BHS61**
BHS78x56x28/G 

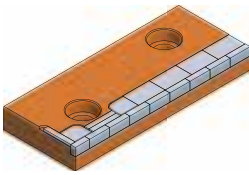


■ **BFS480 + BHS60**

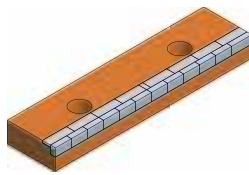


WOOD CHIPPERS

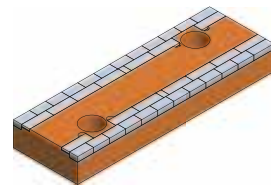
► CARBIDE TIPPED COUNTER BLADES



■ **BFS647**
BFS218x89x25



■ **BFS775**
BFS245x60x25

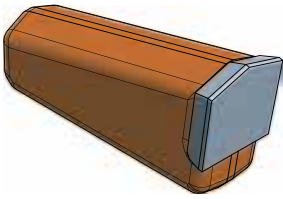


■ **BFS791**
BFS245x80x30

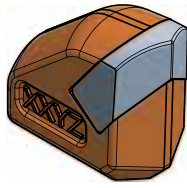


WELD-ON TEETH

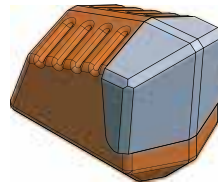
► GENERAL WEAR PARTS




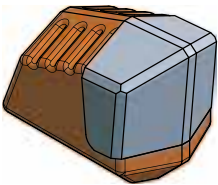
■ **BFZ133**
BFZ60x19/2 | 



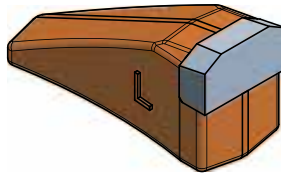
■ **BFZ327**
BFZ42x40x23/1 | 



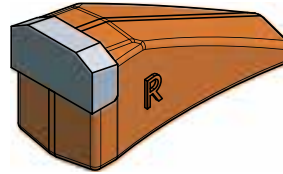
■ **BFZ326**
BFZ38/M | 



■ **BFZ345**
BFZ60x49x38 | 



■ **BFZ25L**
BFZ25-L | 

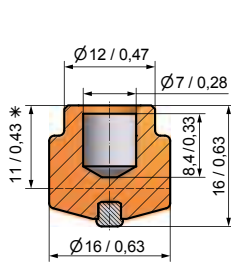


■ **BFZ25R**
BFZ25-R | 

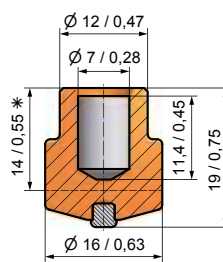
EXTENSIVE WEAR PROTECTION

► OVERVIEW

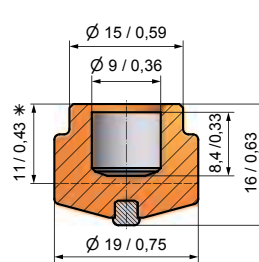
Betek can provide the appropriate stud welding machine for the TungStuds wear protection system.



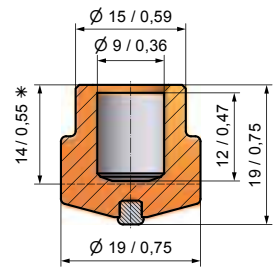
■ **BTS01** BTSD16/16



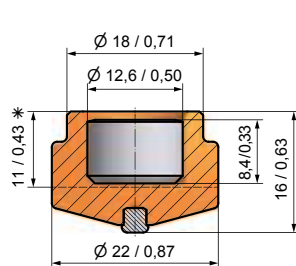
■ **BTS02** BTSD16/19



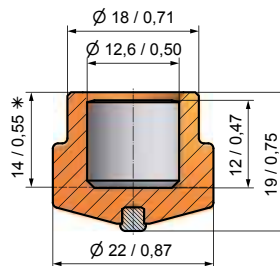
■ **BTS03** BTSD19/16



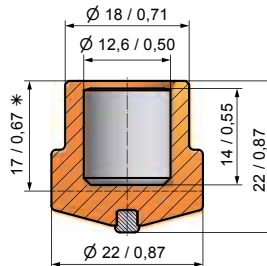
■ **BTS04** BTSD19/19



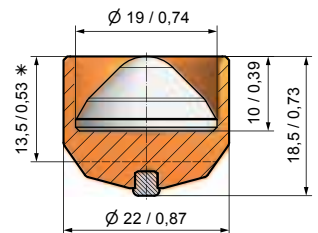
■ **BTS05** BTSD22/16



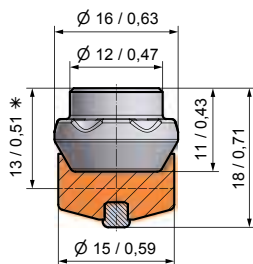
■ **BTS06** BTSD22/19



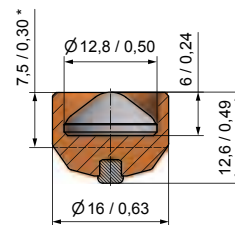
■ **BTS07** BTSD22/22



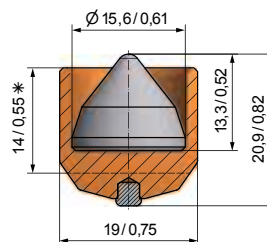
■ **BTS08** BTSD22/18,5SG



■ **BTS10B** BTSD16/18B



■ **BTS20** BTSD16/12,5SG

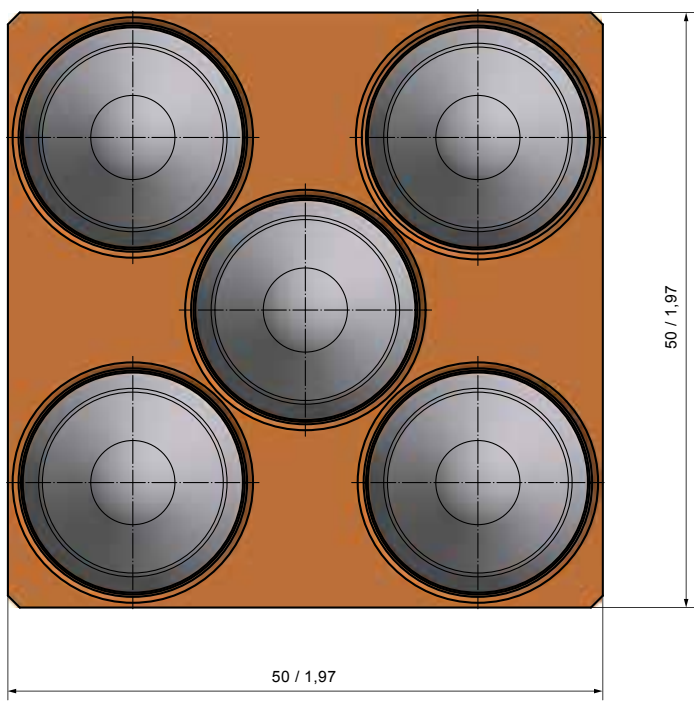
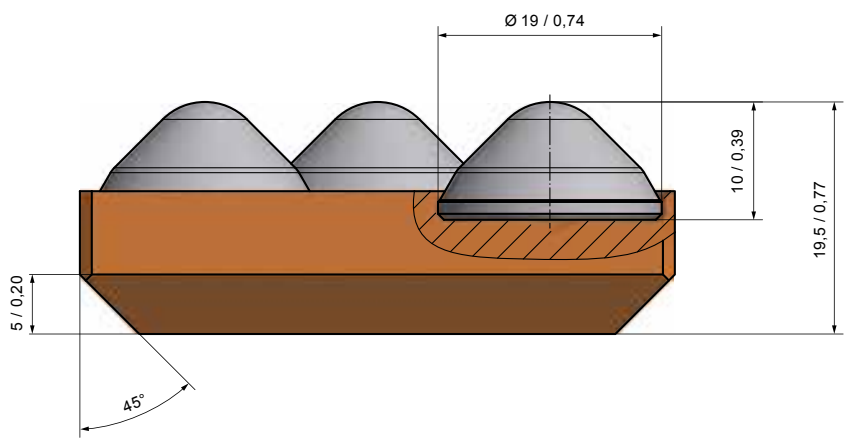


■ **BTS100** BTSD19/15,6SG



*Height after welding

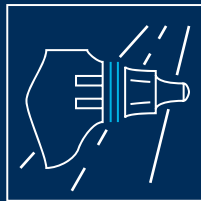
➤ **BTS-PLATES**



DIMENSIONS

Width in mm	Length in mm
50	50
75	75
100	100
125	125
150	150

Other sizes on request



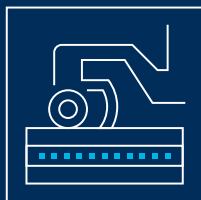
SURFACE TECHNOLOGIES

- ROAD MILLING
- SURFACE MINING
- STABILISING
- RAIL TRACK CONSTRUCTION
- CRUSHING & MIXING



UNDERGROUND TECHNOLOGIES

- FOUNDATION DRILLING
- MINING
- TRENCHLESS
- TRENCHING
- TUNGSTUDS
- DRUM CUTTERS



ENVIRONMENTAL TECHNOLOGIES

- AGRICULTURE
- GRADER TOOLS
- TUNGSTEN CARBIDE
- FORESTRY & RECYCLING

Service number
+49 (0) 7422. 565-0

info@betek.de
www.betek.de